



附件十一

**NPFC IUU VESSEL LIST** <https://www.npfc.int/npfc-iuu-vessel-list>

Commission Members adopted the attached NPFC IUU List at the Third Commission Meeting in July 2017.

No.	a. Name of vessel (previous names)	b. Flag of vessel (previous flags)	c. Owner (previous owners)	d. Operator of vessel (previous operators)	e. Call sign of vessel (previous call signs)	f. Lloyds/IMO number	h. Date first included on NPFC IUU List	i. Summary of activities
1	LIAO YUAN YU 071	unknown	Not known	Not known	Not known	Not known		It was seen at 42°15.4'N, 153°22.8'E on 23 Aug 2016. When the Japanese patrol vessel approached, a vessel crew tried to hide the vessel name. Communication between the Japanese patrol vessel and LIAO YUAN YU 071 indicated that they hid the vessel name because they didn't want to be caught. (Port displayed on the vessel: Shidao; Vessel type; Lighted lift net vessel; Tonnage: 800t)
<p style="text-align: center;"><b>g. Photographs</b></p> <div style="display: flex; justify-content: space-around;">   </div>								

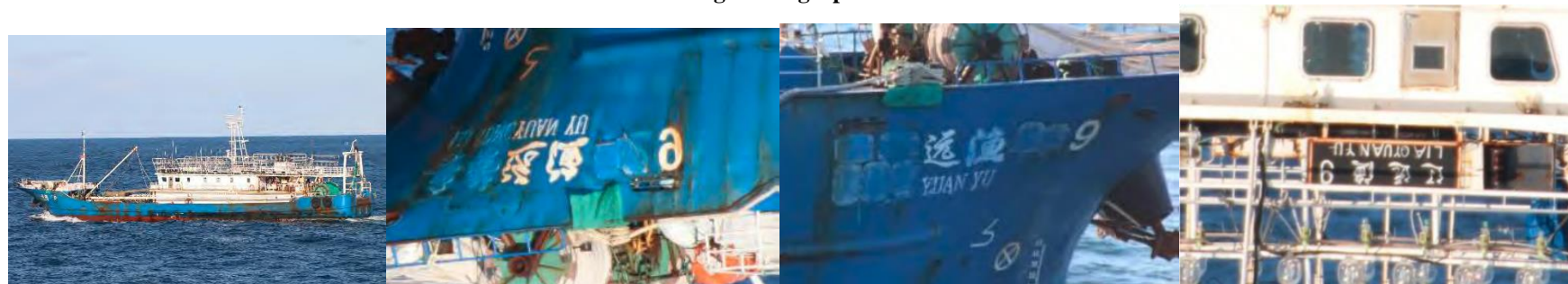
2	LIAO YUAN YU 072	unknown	Not known	Not known	Not known	Not known		It was seen at 42°18.7'N, 153°27.9'E on 23 Aug and at 42°9.2'N, 151°16.4'E on 11 Oct 2016. Vessel name was hidden by paint. (Port displayed on the vessel: Shidao; Vessel type; Lighted lift net vessel; Tonnage: 800t)
---	------------------	---------	-----------	-----------	-----------	-----------	--	---

**g. Photographs**



3	LIAO YUAN YU 9	unknown	Not known	Not known	Not known	Not known		It was seen at 42°3.0'N, 153°0.8'E on 23 Aug and at 42°10.0'N, 151°16.8'E on 11 Oct 2016. Vessel name was hidden by paint. (Port displayed on the vessel: Shidao; Vessel type; Lighted lift net vessel; Tonnage: 800t)
---	----------------	---------	-----------	-----------	-----------	-----------	--	--

**g. Photographs**



4	ZHOU YU 651	unknown	Not known	Not known	Not known	Not known	It was seen at 42°30'2N, 152°05'4E on 29 Sep 2016. (Port displayed on the vessel: Fungcheng; Vessel type; Lighted lift net vessel; Tonnage: 850t)
---	-------------	---------	-----------	-----------	-----------	-----------	---

**g. Photographs**



5	ZHOU YU 652	unknown	Not known	Not known	Not known	Not known	It was seen at 42°48.9'N, 152°48.2'E on 7 Sep 2016. Port of registry was hidden by paint. (Vessel type; Lighted lift net vessel; Tonnage: 820t)
---	-------------	---------	-----------	-----------	-----------	-----------	---

**g. Photographs**



6	ZHOU YU 653	unknown	Not known	Not known	Not known	Not known	<p>It was seen with LU RONG YU YUN 56219 and ZHOU YU 656 at 42°11.9'N, 151°14.6'E on 30 Sep 2016. (Port displayed on the vessel: Fungcheng; Vessel type; Lighted lift net vessel; Tonnage: 850t)</p> <p>Communication between Japanese patrol vessel and LU RONG YU YUN 56219 indicated ZHOU YU 653 were transshipping 1500t of mackerel together with ZHOU YU 656.</p>
---	-------------	---------	-----------	-----------	-----------	-----------	---

**g. Photographs**





9	ZHOU YU 658	unknown	Not known	Not known	Not known	Not known	It was seen at 40°12.3'N, 148°40.5'E on 29 May 2016 and at 42°46.7'N, 152°41.2'E on 7 Sep 2016. (Port displayed on the vessel: Zhoushan; Vessel type; Lighted lift net vessel; Tonnage: 600t)
---	-------------	---------	-----------	-----------	-----------	-----------	---

**g. Photographs**



10	ZHOU YU 659	unknown	Not known	Not known	Not known	Not known		It was seen in the NPFC area on 2, 4, 13, 17 Jun and 7 Sep 2016. On 4 Jun the vessel name on the right side was hidden by paint. (Port displayed on the vessel: Zhoushan; Vessel type: Lighted lift net vessel; Tonnage: 600t)
----	-------------	---------	-----------	-----------	-----------	-----------	--	--

**g. Photographs**



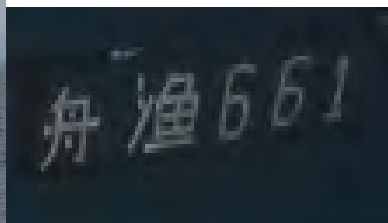
11	ZHOU YU 660	unknown	Not known	Not known	Not known	Not known	<p>It was seen in the Japanese EEZ on 10 May 2016 and in NPFC area multiple times from May to Sep 2016. On 10 May the vessel showed Korean flag but changed the Korean to Japanese flag when the Japanese patrol vessel approached.</p> <p>Vessel name changed between 15 May and 12 Sep 2016 (see the photos). The vessel is not permitted in Japan nor registered in NPFC. (Port displayed on the vessel: Basuo-not apparent; Vessel type: Lightedlift net vessel; Tonnage: 600t)</p>
----	-------------	---------	-----------	-----------	-----------	-----------	---

**g. Photographs**



12	ZHOU YU 661	unknown	Not known	Not known	Not known	Not known	<p>It was seen in the Japanese EEZ on 10 and 13 May 2016 and in NPFC area on 15, 29 May and 7 Sep 2016. The vessel names on the left and right side changed frequently (see the photos). The vessel showed Japanese flag in May. But the vessel is not permitted in Japan nor registered in NPFC. (Port displayed on the vessel: Shidao; Vessel type: Lighted lift net vessel; Tonnage: 600t)</p>
----	-------------	---------	-----------	-----------	-----------	-----------	---

**g. Photographs**



13	HAI DA 705	unknown	Not known	Not known	Not known	Not known	Communications between Japanese Patrol vessel and HAI DA705 at 43°10.4'N, 153°38.6'E on 11 Sep 2016 indicated they caught squid with drift net in the high sea. (Port displayed on the vessel: 沈家们; Vessel type: Drift net vessel; Tonnage: 290t)
----	------------	---------	-----------	-----------	-----------	-----------	---

**g. Photographs**



Drift net

14	LU RONG YU 1189	unknown	Not known	Not known	Not known	Not known		It was seen at 41°24.9'N, 140°32.7'E (Japan EEZ) on 14 Jun 2016. (Port displayed on the vessel: Shidao; Vessel type: Carrier vessel; Tonnage: 100t)
----	-----------------	---------	-----------	-----------	-----------	-----------	--	---

**g. Photographs**



15	ZHE LING YU LENG 90055	unknown	Not known	Not known	Not known	Not known		It was seen at 40°25.3'N, 149°13.2'E on 29 May 2016. (Port displayed on the vessel: Wenling; Vessel type: Carrier vessel; Tonnage: 600t)
----	------------------------	---------	-----------	-----------	-----------	-----------	--	--

**g. Photographs**



16	ZHE LING YU LENG 905	unknown	Not known	Not known	Not known	Not known	It was seen at 42°45.6'N, 152°45.8'E on 24 Aug 2016. (Port displayed on the vessel: Wenling; Vessel type: Carrier vessel; Tonnage: 1000t)
g. Photographs (No Photographs Available)							